

## Airborn Blade Antenna

This high performance Blade antenna is designed for use on supersonic airborne platforms.

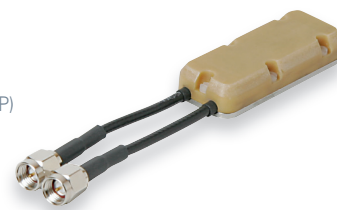
- Frequency: 1.43 - 5.9 Ghz
- Bandwidth: 9% typ.
- Polarization: Vertical
- Coverage Az: Omni directional
- Coverage El: Similar to quarterwave monopole
- Gain: +3.0 dBi typ.
- Power: 40 W CW
- Connector: SMA- F
- Dimensions: 1.18"H x 3.0"L x 0.50"W
- Weight: 1.0 oz. max.
- Applications: Airborne vehicles



## Dual CP - Shoulder Mount Antenna

The Dual CP antenna is made from two drooping crossed dipoles. This antenna was designed to be shoulder mounted.

- Frequency: 6 - 6.6 Ghz
- Gain: 1dBiC typ.
- Axial Ratio: 2 dB
- Polarization: CP (RHCP and LHCP)
- Coverage Az: Omni directional
- Coverage El: 120 degrees
- Isolation: 28 dB
- Dimensions: 2.0" x 0.5" x 0.36"
- Applications: UWB communication



## Conformal Antenna

Conformal antennas are widely use in airborne applications. Due to their low profile, they have low drag. The conformal antennas are covered with a radome. These antennas can be used in any extreme operating conditions.

- Frequency: 2.20-2.29 Ghz
- Gain: 0 dBil typ.
- Polarization: Linear, Axial
- Coverage: Spherical
- Connector: SMA- F
- Power: 20 W, CW
- Dimensions: 4.85" dia. x 2.938"L x 0.066"H
- Weight: 4.4 oz.
- Application: Missiles, Bombs, Aircraft, and Ground vehicles



## Quadrifilar Helix Antenna

The Quadrifilar Helix is popular in Mobile Satellite Communication application. It is circularly polarized and does not need a ground plane. It's form factor as well as coverage can be controlled for a specific application.

- Frequency: 2.3 Ghz
- Bandwidth : 30 Mhz typ.
- Gain: 1-2 dBiC typ.
- Axial Ratio : 2 dB max.
- Polarization: CP (RHCP or LHCP)
- Coverage Az: Omni directional
- Coverage El: 120 degrees
- Applications: Satellite radio, GPS, Iridium, and such.



## Conical Spiral Antenna

The Conical Spiral is a broadband antenna. It is inherently circularly polarized. It has a constant coverage performance over the band of operation. The coverage can be tailored per customer need.

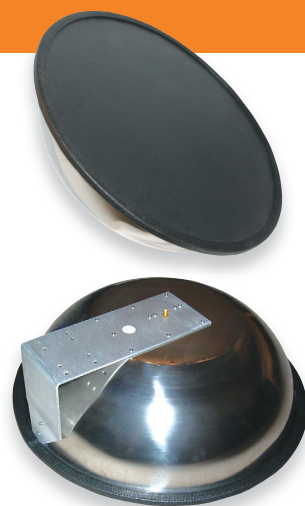
- Frequency: 6-18 Ghz
- Gain: 0 dBiC typ.
- Polarization: CP (RHCP or LHCP)
- Coverage Az: Omnidirectional
- Coverage El: 130-180 degrees
- Axial Ratio: 5 dB max.
- Dimensions: 1.5" dia. x 6.0"L
- Weight: 3.0 oz.
- Applications: Electronic warfare



## UHF Reflector Antenna

The UHF reflector is a lightweight antenna designed for mobile applications. The antenna is broadband, highly efficient, and environmentally sealed.

- Frequency: 610-750 Mhz
- Gain: 9-10 dBi
- Polarization: Linear, Vertical
- Coverage A.: 60 degrees.
- Coverage El: 60 degrees
- Dimensions: 19.0" dia. x 8.875"
- Weight: 1.5 lb.
- Applications: UAV's



## Stub Antenna

The Stub antenna is low profile with exceptionally broadband behavior. The antenna has electrical performance similar to  $\lambda/4$  Monopole antenna. The antenna was developed for UWB communication.

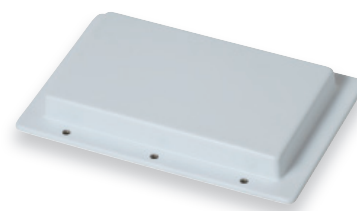
- Frequency: 1.35 - 1.75 Ghz
- Gain: 1 dBi typ.
- Polarization: Linear, Vertical
- Coverage Az.: Omnidirectional
- Coverage El: Hemispherical
- Dimensions: 0.75" dia. x 1.7" (including connector)
- Applications: Mobile communication



## Tx/Rx Basestation Antenna

The Tx/Rx receive antenna was developed for UWB wireless microphone application. It contains transmit and receive printed dipole arrays. The antenna is FCC certified for UWB applications.

- Frequency: 6 - 6.6 Ghz
- Gain: Transmit - 5 dBil, Receive - 12 dBil
- Polarization: Linear, vertical
- Isolation: 25 dB
- Coverage: Transmit - 90° x 90°, Receive - 45° x 45°
- Dimensions: 3.0" x 4.5" x 0.5"
- Weight: 0.25 lb.
- Applications: UWB communication



## Tx/Rx Omni Antenna

The Tx/Rx Omni antenna is a proprietary design in which two stacked dipole arrays are in line with each other. The antenna gains can be designed per customer needs. The antenna was originally designed for UWB, and manpack applications.

- Frequency: 6 - 6.6 Ghz
- Gain: 3.5 dBi (Tx or Rx)
- Isolation: 28 dB
- Polarization: Linear, Vertical
- Coverage Az: Omnidirectional
- Coverage El: 45 degrees
- Dimensions: 0.75" dia. x 6.5"
- Applications: Manpack, Mobile



## Telemetry Feed Antenna

The Telemetry feed is a broadband crossed dipole in a cup design. It is self contained with an embedded hybrid that generates simultaneous RHCP and LHCP polarizations. The antenna is popular as an acquisition feed for tracking systems.

- Frequency: 1.45 - 2.50 Ghz
- Gain: 6.5- 8.0 dBiC
- Polarization: Dual CP
- Axial ratio: 1.5 dB typ.
- Coverage Az: 90 degrees
- Coverage El: 90 degrees
- Dimensions: 6.0" dia. x 5.0"
- Weight: 0.5 lb.
- Applications: Telemetry



## Diversity Array Antenna

The diversity antenna is a 2x2 crossed dipole array. The antenna is compact and lightweight. The antenna contains a hybrid to generate the RHCP and LHCP polarization modes.

- Frequency: 1.75 - 2.0 Ghz
- Gain: 12 dBiC
- Polarization: dual CP
- Isolation: 20 dB
- Coverage.: 45° x 45° typ.
- Axial ratio: 2.0 dB max.
- Dimensions: 7.5" x 8.0"
- Weight: 0.25 lb.
- Application: Wireless video



## Cavity Backed Spiral Antenna

The Cavity Back Spiral is a broadband antenna with constant coverage and gain across the operating frequency. The antenna is mainly used in Electronic Warfare (EW) applications.

- Frequency: : 2 - 18 Ghz
- Gain: 2-3 dBiC
- Axial Ratio: 2 - 3 dB
- Polarization: CP (RHCP or LHCP)
- Coverage Az: 90 - 100 degrees
- Coverage El: 90 - 100 degrees
- Applications: Airborne

